

Lea H75 M TS Stool

design Paolo Vernier, 2019

Stool with four legs base in steel. Seat and backrest upholstered in fabric, leather or faux leather also with different fabrics for front face and back face.



Colors and Materials

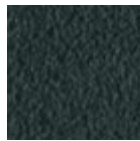
Structure



White Steel



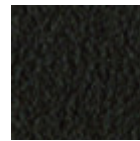
Sand Steel



Grafite Steel



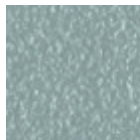
Black Steel



Brown Steel



Pastel Yellow Steel



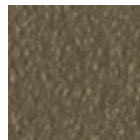
Light blue steel



Ocean Blue Steel



Bronze Steel



Fango Steel



Light Grey Steel



Ocher Steel



Facepowder Pink Steel



Red steel



Sage Green Steel



Chrome

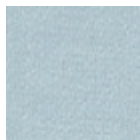


Pink Gold



Black Nickel

Coating



Hot Fabric
14 Colors



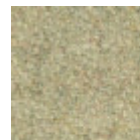
Bubble Fabric
14 Colors



Carabù Fabric
15 Colors



Cotton Club Fabric
13 Colors



Fenix Wool Fabric
13 Colors

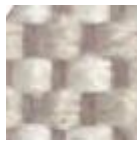


Main Line Flax Fabric
16 Colors



Mirage Fabric

6 Colors



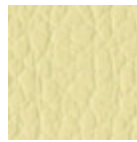
Scubidù Fabric

10 Colors



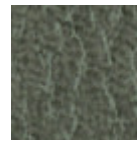
Second Fabric

11 Colors



Secret Faux Leather

22 Colors



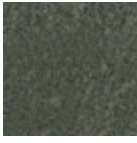
Vintage Faux Leather

12 Colors



Fiore Leather

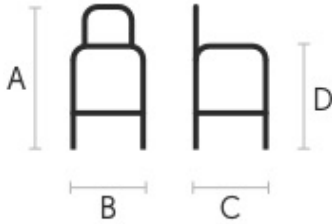
18 Colors



Vintage Leather

4 Colors

Dimensions



	cm	inch
A	109	42.9
B	57	22.4
C	49	19.3
D	75	29.5

Volumetric Details

Weight 10 Kg

Volume 0.38 mc

Package 1

Materials Certifications

Hot Fabric

MARTINDALE: 45'000 cycles

COMPOSITION: 100% PES

FIRE RESISTANCE:

BS5852:2006 (p. 11 CRIB 5)

EN1021-1

EN1021-2

UNI 9175:2010 - 1 IM

PROPERTIES AND ADVANTAGES

Hot is a polyester fabric entirely manufactured and tested in Italy which has been studied for the upholstered furniture sector. Special dyeing methods are used to provide volume to Hot fabrics and make them extremely soft. This fabric is highly resistant and both its warp and weft are 100% fireproof. Since it has successfully passed the most exacting reaction to fire tests, it can be used in the professional and hospitality/ contract settings. Hot mixes together the elegance, the embracing materials and the prestige of traditional home fabrics with the resistance and the high technical performances typical of contract textile.

CLEANING INSTRUCTIONS

Pen: treat immediately using denatured colorless alcohol. Brush then using neutral detergent and put in washing-machine. Milk, butter and oil: absorb immediately using blotting paper. Brush then using neutral detergent and put in washing-machine. Drinks: rinse immediately with abundant water and neutral soap. Put then in washing-machine. Adhesives and chewingum: harden the stain using some ice, remove the residues, apply a lubricant solution and let it dry. If necessary, repeat the operation and put then in washingmachine. Food debris: brush with water and neutral soap or with alcohol diluted in water at 20%. Put then in washing-machine.

Slight color differences between a lot and the other are to be considered normal.

Materials Certifications

Bubble Fabric

MARTINDALE: 35'000 cycles

COMPOSITION: 100% PES

FIRE RESISTANCE:

BS5852:2006 (p. 11 CRIB 5)

EN1021-1

EN1021-2

UNI 9175:2010 - classe 1 im

PROPERTIES AND ADVANTAGES

Bubble is a polyester fabric entirely manufactured and tested in Italy which has been studied for the upholstered furniture sector. Made applying special technical finishings that reduce height and increase thickness of the geometrical shapes on the surface. This fabric is highly resistant and both its warp and weft are 100% fireproof. Since it has successfully passed the most exacting reaction to fire tests, it can be used in the professional and hospitality/ contract settings. Bubble mixes together the elegance, the embracing materials and the prestige of traditional home fabrics with the resistance and the high technical performances typical of contract textile.

Slight color differences between a lot and the other are to be considered normal.

Materials Certifications

Carabù Fabric

COMPOSITION: 50% PES, 35% AC, 15% PA

MARTINDALE: 250.000 CYCLES

FIRE RESISTANCE:

BS 5852 1-2

EN 1021 1-2

PROPRIETIES AND ADVANTAGES:

This special fabric allows you to eliminate little stains of wine, coffee, food and some markers without having to resort to complete washing with detergent.

MAINTENANCE

Use periodically vacuum cleaner on the surface with a flat spout. In order to treat the stains, remove the excess residue left on the fabric by applying (directly or with an absorbent cloth) water on the stain; then rub gently on the fabric. If the stain does not disappear completely repeat the procedure as many times as necessary.

Slight color differences between a lot and the other are to be considered normal.

Materials Certifications

Cotton Club Fabric

COMPOSITION: 70 % COT; 10% PES; 10% ACR; 10% AF

WASHING

Dust gently and in case of light stains pass the surface with a damp cloth or a neutral detergent, rinse with water without squeezing. Let the fabric dry inside out avoiding direct exposure to the sunlight. Iron to the reverse at low temperature. The following instructions are recommended for small located and more obstinate stains

(oil, fat, cosmetics, ink, coffee, liquor, chewing-gum etc.): dissolve immediately with clear ethylic alcohol diluted in water to 20%, dab and then treat with a neutral detergent solution. Rinse abundantly.

GENERAL WARNINGS

To avoid permanent stains, the lighter colours of the article should not be brought into contact with textiles and clothing coloured with unfixed dyes. We cannot guarantee the ability to remove unknown dyes from light coloured product.

Slight color differences between a lot and the other are to be considered normal.

Materials Certifications

Fenix Wool Fabric

Martindale: 100.000 cycles
Composition: 75% wool; 25% Polyamide

FIRE RESISTANCE

CLASSE 1 IM,
EN 1021 Part 1-2,
Calif. Bull. 117

PROPRIETIES AND ADVANTAGES

The particular finish of the Fenix Wool fabric is obtained by a stabilization treatment which gives a particularly soft hand but very consistent, able to achieve excellent values of resistance to pilling and abrasion. This fabric is made from regenerated wool. The recycling allows the creation of fabrics even more varied and rich in composition with inimitable content of fantasy. The very contemporary color palette is coordinated harmoniously both for domestic and for the office sector. The fabric is produced entirely in Italy.

CLEANING INSTRUCTIONS

We recommend to use a regular vacuum cleaner with plain tip, do not brush. Dry cleaning is recommended. Some colorants used for garments or accessories (i.e. jeans) may stain pale colours of this product. This tendency increases in a damp, warm environment.

Materials Certifications

Main Line Flax Fabric

COMPOSITION: 70% Virgin Wool – 30% LI

MARTINDALE: 50.000 CYCLES

FIRE RESISTANCE:

EN 1021 Part.1-2
BS 5852 Crib 5
BS 7176 Low Hazard
BS 7176 Medium Hazard
UNI 9175 Classe 1IM

FEATURES:

Main Line Flax is a precious fabric that derives from the processing of natural fibers such as flax and wool. It is an intrinsically fireproof fabric, coming from sustainable sources. Flax is mixed with wool, then dyed, to create wonderful plays of color.

MAINTENANCE:

Use regularly the smooth spout vacuum cleaner, without brushing. The textile product cannot stand chlorine treatment. Dry at low temperatures. In case of stains, promptly intervene by dabbing with a damp and clean cloth or using specific products for upholstery.

Slight color differences between a lot and the other are to be considered normal.

Materials Certifications

Mirage Fabric

Martindale: 100.000 cycles
Composition: 100% Polyester
Shrinking about 1%

FIRE RESISTANCE

Classe 1IM
B1 DIN 4102
Q1 OENORM B3825
Q1 OENORM 3800 Part. 1
BS 5852 Crib 5

EN 1021 Part.1-2
Calif. Bull. 117
EN 13501 - 1 1,2 : B-s1 , d0
EN 13773 Burning Behaviour: class 1
EN ISO 6940/6941
Fire Protection Classification: 5.3
NF D 60-013:2006 AM18
FAR.25853 Classification: Yes

PROPRIETIES AND ADVANTAGES

Mirage is a two-way stretch fabric with crep armor, it is very resistant to abrasion and pilling. Mirage is equipped with the best certificates required for the resistance to fire.

CLEANING INSTRUCTIONS

We recommend to use a regular vacuum cleaner with plain tip, do not brush. For light stains, rub the surface gently with a damp cloth or use neutral fabric detergents. Leave to dry away from sunlight.

Materials Certifications

Scubidù Fabric

COMPOSITION: 100% PL

MARTINDALE: 35.000 CYCLES

MAINTENANCE

Use regularly the smooth spout vacuum cleaner , without brushing. The textile product cannot stand chlorine treatment. Dry at low temperatures. In case of stains, promptly intervene by dabbing with a damp and clean cloth or using specific products for upholstery.

Slight color differences between a lot and the other are to be considered normal.

Materials Certifications

Second Fabric

Martindale 25.000 cycles
Composition: 70% VI - 30% LI

FIRE RESISTANCE:

Italy - Classe 1IM
EN 1021 Part.1-2
BS 5852 Crib 5
France - M1
USA Calif. Bull. 117 June 2013
IMO 307 (88) Part.8

FEATURES

100% consisted of natural fibers. It does not contain chemical additives nor fire-resistant agents. It does not contain formaldehyde nor chlorine or bromine. It is biodegradable. It is resistant to temperatures above 1000°.

MAINTENANCE

Use regularly the smooth spout vacuum cleaner , without brushing. The textile product cannot stand chlorine treatment. Dry at low temperatures.

Slight color differences between a lot and the other are to be considered normal.

Materials Certifications

Secret Faux Leather

MARTINDALE: 60'000 cycles

COMPOSITION: 76% PVC - 2% PU 22% PES

FIRE RESISTANCE:

EN 1021-2:2006
UNI 9175 CLASSE 1 IM

PROPRIETIES AND ADVANTAGES

Secret is a fire retardant ecoleather totally made in Italy. It contains high resistant polymers of new conception more resistant to sun exposure and to use. Secret has been designed to realize soft interior upholstery: its elastic backing, made of polyester, allows it to adapt to the new geometries of upholstery with greater assurance of strength and durability.

CLEANING INSTRUCTIONS

Dust gently and in case of light stains pass the surface with a damp cloth or a neutral detergent, rinse with water without squeezing. Let the fabric dry inside out avoiding direct exposure to the sunlight. Iron to the reverse at low temperature. The following instructions are recommended for small located and more obstinate stains (oil, fat, cosmetics, ink, coffee, liquor, chewing-gum etc.): dissolve immediately with clear ethylic alcohol diluted in water to 20%, dab and then treat with a neutral detergent solution. Rinse abundantly. To avoid permanent stains, the lighter colours of the article should not be brought into contact with textiles and clothing coloured with unfixed dyes. We cannot guarantee the ability to remove unknown dyes from light coloured product.

Materials Certifications

Vintage Faux Leather

MARTINDALE: 50'000 cycles

COMPOSITION: 80% PVC; 2% PU; 18% PES

FIRE RESISTANCE:

UNI 9175: classe 1IM

EN 1021-2

PROPRIETIES AND ADVANTAGES

This faux leather's surface is made using a microscopic texture which makes it similar to natural leather to the touch while keeping the typical characteristics of technical fabric such as endurance and ease of use. The Vintage faux leather features a special mesh fabric construction, slightly elastic, that makes it easily adaptable to the new modern shapes of upholstered furniture and guarantees long life. Soft, enveloping and fire resistant, this fabric adapts to contract or residential spaces.

CLEANING INSTRUCTIONS

Dust gently and in case of light stains pass the surface with a damp cloth or a neutral detergent, rinse with water without squeezing. Let the fabric dry inside out avoiding direct exposure to the sunlight. Iron to the reverse at low temperature. The following instructions are recommended for small located and more obstinate stains (oil, fat, cosmetics, ink, coffee, liquor, chewing-gum etc.): dissolve immediately with clear ethylic alcohol diluted in water to 20%, dab and then treat with a neutral detergent solution. Rinse abundantly. To avoid permanent stains, the lighter colours of the article should not be brought into contact with textiles and clothing coloured with unfixed dyes. We cannot guarantee the ability to remove unknown dyes from light coloured product.

Materials Certifications

Fiore Leather

COMPOSITION: 100% pelle

FIRE RESISTANCE:

BS 5852:1979

BS EN 1021-1-2:2006

PROPRIETIES AND ADVANTAGES

The Fiore leather is a bovine leather of european origin, corrected and embossed for enhanced grain consistency. Finished using water based system. This product has a pigmented and protective top coat, with a soft handle and a silky matt finish.

CLEANING INSTRUCTIONS

Grain leather offers the benefit of improving in the course of time and with wear, both in terms of softness and sheen. To remove stains, it is advisable to rub the affected area with a clean, soft cloth or use a solution of water and a little neutral soap that must be applied gently onto the stain using a damp cloth. Rinse thoroughly and leave to dry away from direct sunlight.

Materials Certifications

Vintage Leather

Our Vintage Leather is a natural product, therefore the signs and imperfections on its surface, such as wrinkles, veins, scars and scratches as well as color differences are not to be considered defects but typical characteristics that enhance the beauty of the real leather and distinguish it from synthetic leather and other artificial products.

MARTINDALE: 50.000 cycles

PROPRIETIES AND ADVANTAGES

This leather with a distressed effect comes from Bovine of European origin. This high quality article is obtained starting with nubuck leather, which is slightly levelled with aniline and hand rubbed to give an aged effect. It has a very warm and silky feel.

CLEANING INSTRUCTIONS

Vintage leather offers the benefit of improving in the course of time and with wear, both in terms of softness and sheen. Remove stains with a damp cloth and leave to dry away from sunlight. Do not use chemical detergents.

Slight color differences between a lot and the other are to be considered normal.