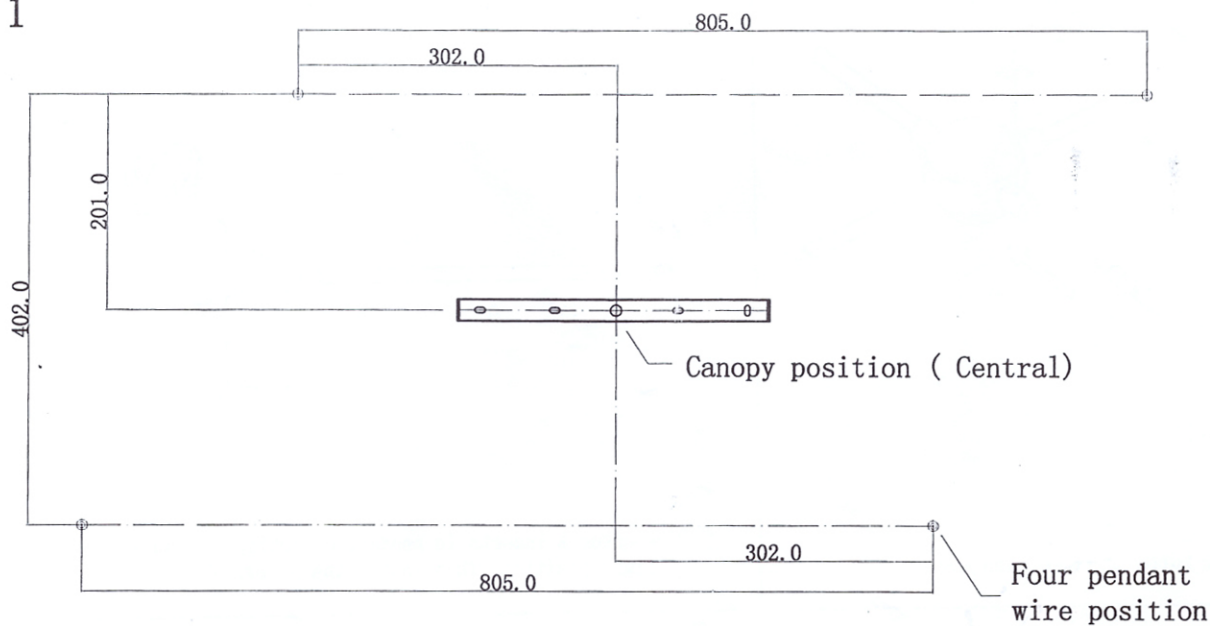
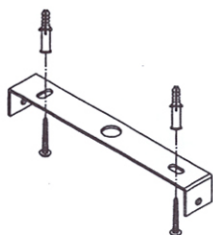


NO. 1

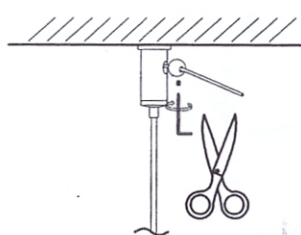


Set the mounting position of pendant wire and canopy according to this drawing.

NO. 2



NO. 3

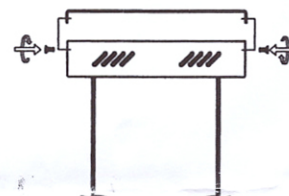


Cut off the redundant wire after adjusting well the whole light height. Then fasten the set screw.

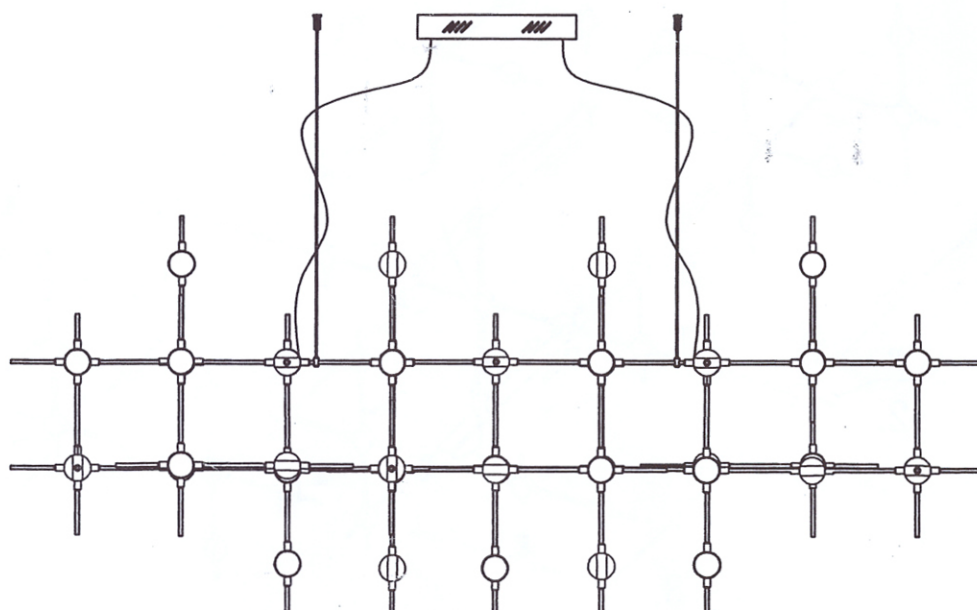
NO. 4



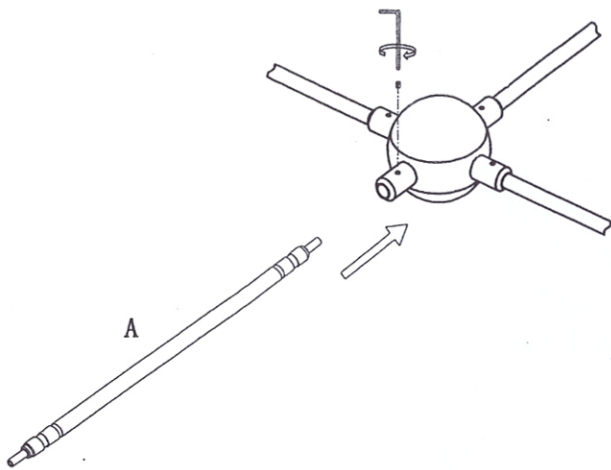
NO. 5



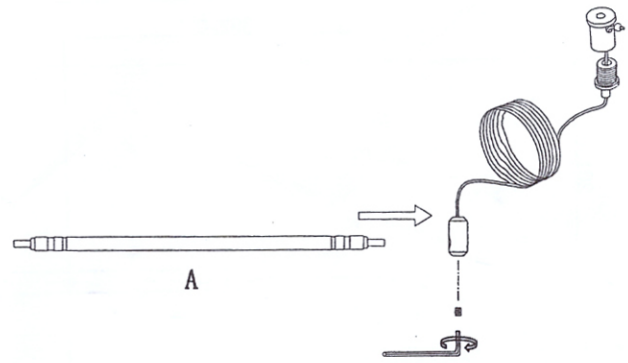
MD18001067-55A



1. This light fitting operates at a normal supply voltage of 220V-240V.
2. When changing the bulb or fuses, always switch off at the mains and allow the old bulb to cool down before handling.



Connector A inserts in balls, and fasten the screw.



Connector A inserts in pendant assembly, to the right position. Then fasten the screw.

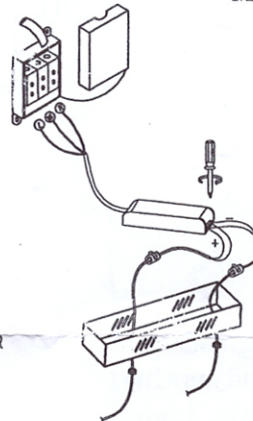
FIXTURE ASSEMBLY ( REFER TO BELOW PHOTOS)

A (172.0mm) -62pcs

B (100.0mm) -10pcs

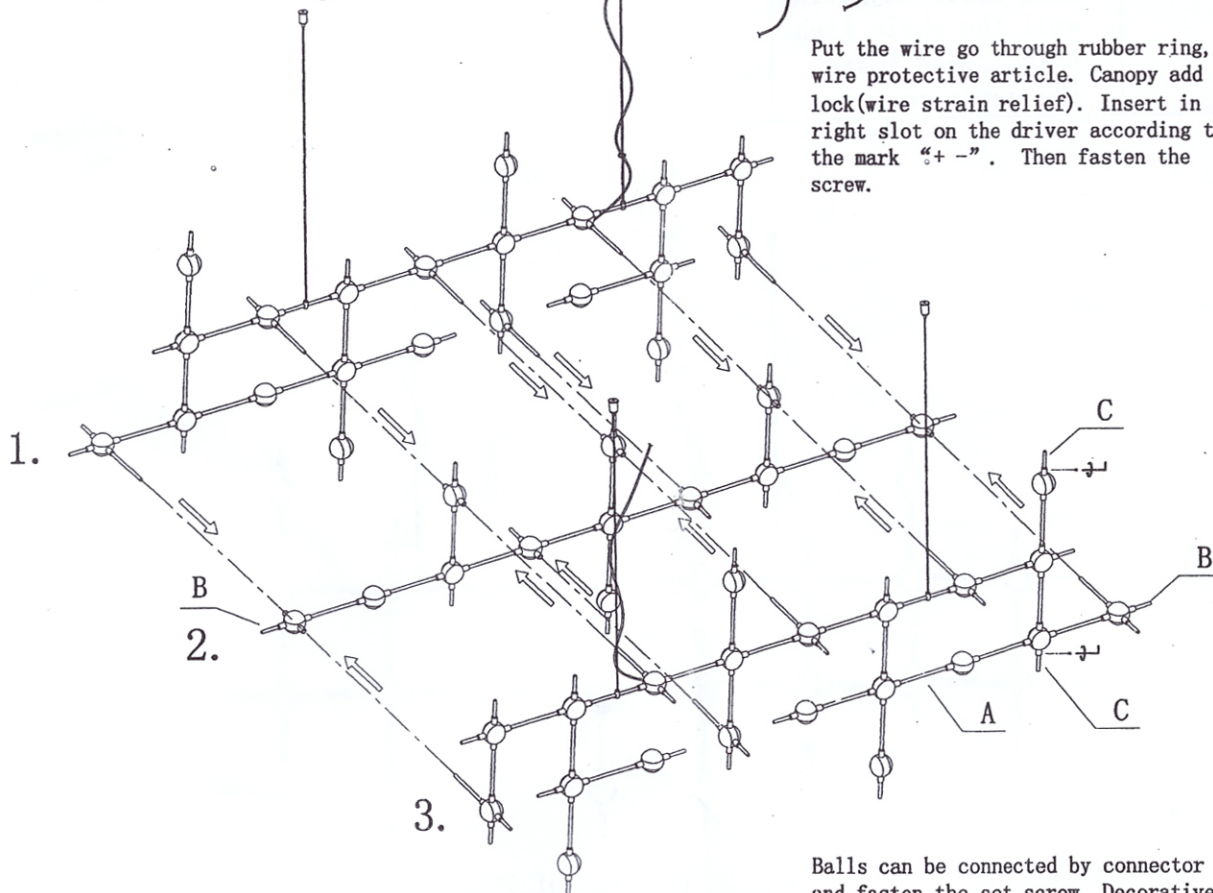
C (65.0mm) -43pcs

MD1800/067-55A



Wire goes through the rubber ring and pendant wire.

Put the wire go through rubber ring, wire protective article. Canopy add 8 lock(wire strain relief). Insert in the right slot on the driver according to the mark "+ -". Then fasten the screw.



Balls can be connected by connector A, and fasten the set screw. Decorative connector B and C can be connected at randomly, and fasten the screw.