



# Joint Coffee Table

Joint coffee table with round base in chrome or black nickel. Top in ceramic or upholstered in hide.

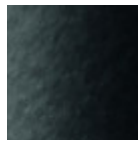


## Colors and Materials

### Structure



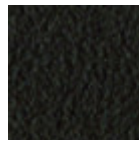
White Steel



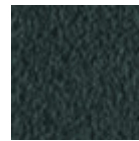
Black Seel



Sand Steel



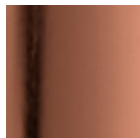
Brown Steel



Grafite Steel



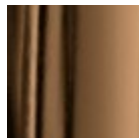
Chrome



Pink Gold



Black Nickel

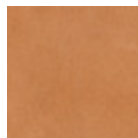


Golden Bronze

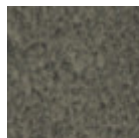
### Coating



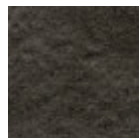
Hide  
20 Colors



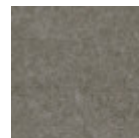
Tuscan Hide  
3 Colors



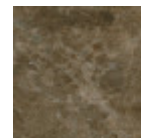
Lead Ceramic



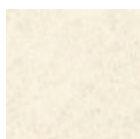
Charcoal Savoia  
Ceramic



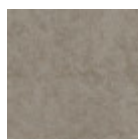
Cement Savoia  
Ceramic



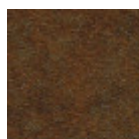
Emperador Marble  
Ceramic



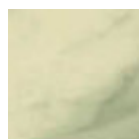
Oxide White Ceramic



Oxide Sand Ceramic

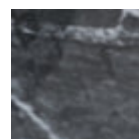


Corten Ceramic

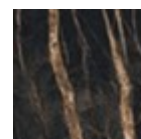


Ceramic with effect  
calacatta marble

1 color



Black greek glossy  
marble ceramic

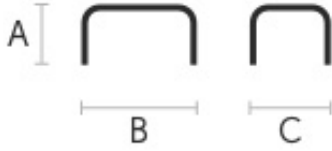


Noir desir glossy  
ceramic marble



Venetian glossy  
ceramic

## Dimensions



	A (cm) (inch)	B (cm) (inch)	C (cm) (inch)
<b>H35 ø50 (cm)</b> (inch)	35 13.8	50 19.7	50 19.7
<b>H60 ø50 (cm)</b> (inch)	60 23.6	50 19.7	50 19.7
<b>H35 ø100 (cm)</b> (inch)	35 13.8	100 39.4	100 39.4

## Volumetric Details

**Weight** 9 Kg

**Volume** 0.12 mc

**Package** 1

## Downloads

**3D Joint H35 (zip)** - <https://www.midj.com/images/uploads/resources/joint-h35-3d.zip>

**3D Joint H60 (zip)** - <https://www.midj.com/images/uploads/resources/joint-h60-3d.zip>

## Materials Certifications

### Hide

#### FIRE RESISTANCE:

Technical Bulletin 117/00 sez E part. 1

EN 1021 parte 1/94, parte 2/94

BS 5852/90

#### PROPRIETIES AND ADVANTAGES

The hide is a hygienic and very practical product: it resists to wear, it's impermeable to water but, at the same time, the hide wicks air and sweat. The hide is obtained from the skin of bovines breeds and slaughtered for food purposes and subsequently treated with chromium salts.

#### CLEANING INSTRUCTIONS

Use only a damp, non abrasive cloth; do not use products containing solvents or alcohol that may damage the surface. It is advisable to test an invisible area of the product before cleaning it all. For good preservation of the product purchased, it is unadvisable to expose it to direct sunlight that may alter its features and colours. Any surface imperfections are natural features of hide and guarantee that it is an original product.

## Materials Certifications

### Tuscan Hide

Tuscan Hide does not fear to get aged since the oldest it gets the more unique it becomes.

It is a material deriving from animal's leather which suffer a process called "vegetable tanning" with natural tannins and with the help of some products biologically compatible whether for the dyeing or for the finishing.

Any possible imperfection, sign, scar, stain of the Tuscan hide surface are a natural characteristics which

guarantees its originality.