

# Clessidra Table

design Paolo Vernier

Fixed round table with solid or two-colored steel base. Wooden version available. Crystalceramic or wooden top.



## Colors and Materials

### Structure



White Steel



Sand Steel



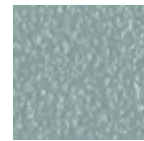
Grafite Steel



Brown Steel



Black Steel



Light blue steel



Ocean Blue Steel



Bronze Steel



Fango Steel



Pastel Yellow Steel



Ocher Steel



Facepowder Pink Steel



Red steel



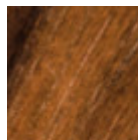
Sage Green Steel

### Coating

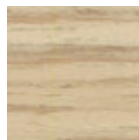


Ceramic with effect calacatta marble

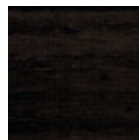
1 color



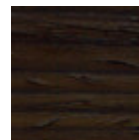
Veneered Flamed Walnut



Veneered wood light oak

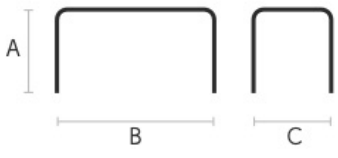


Black Lacquered Veneered Wood



Veneered Wood Dark Oak

## Dimensions



	cm	inch
<b>A</b>	76	29.9
<b>B</b>	150	59.1
<b>C</b>	150	59.1